

Student _____

Group _____

Laboratory work № 1 «Resistance spot welding»

Technical data of the machine MT-1606

Materials to be welded and its thickness: _____

Maximum power of the machine is _____ kW, rated welding current is _____ kA.

The electric circuit of the machine MT-1606

PLSU – _____

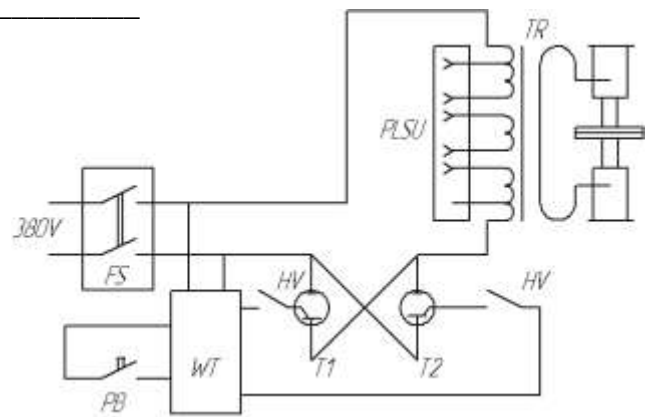
TR – _____;

PB – _____;

HV – _____;

T₁, T₂ – _____;

FS – _____; WT - _____;



The pneumatic system of the machine MT-1606

1 – _____;

2 – _____;

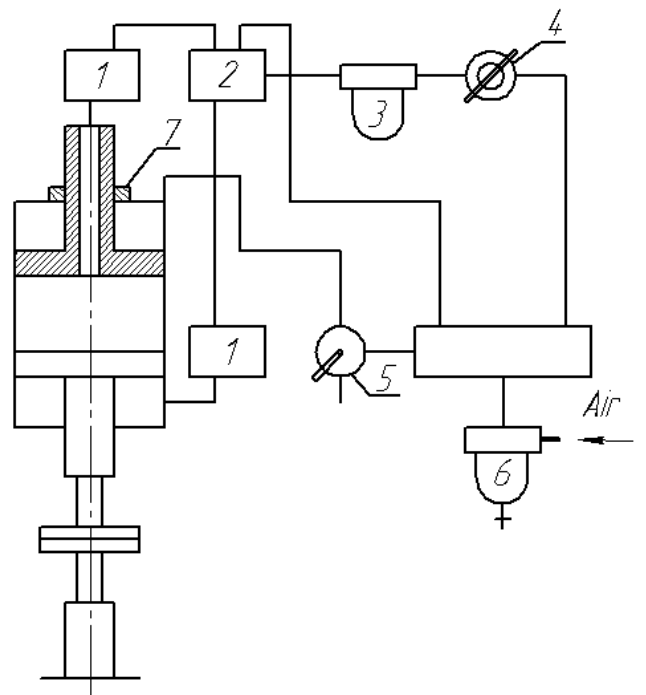
3 – _____;

4 – _____;

5 – _____;

6 – _____;

7 – _____;



The main parameters of the spot welding process are I_w - _____,

t_w - _____, P - _____,

d_e - _____

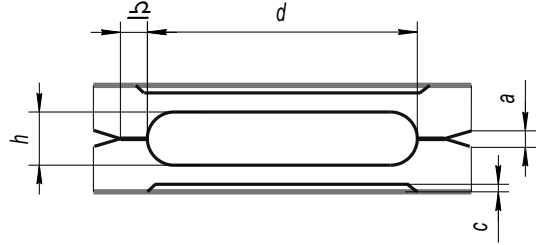
The parameters of welded spot are:

d - _____;

h - _____;

a - _____;

c - _____; δ - _____.



Protocol of the sample's testing

Experiment number	Material - _____; Sheet thickness, S, mm - _____ + _____					
	Electrode contact spot diameter, mm -, d_c , mm - _____					
	Pressure, atm	Pressing force, P, kN	Power Level	Welding time, t_w , sec	Distractive force, F_d , kN	Nature of destruction
1.						
2.						
3.						
4.						
5.						

Strength diagram

F _d , kN							
							t _w , sec

Conclusions: _____

Rating _____

Instructor's signature _____